

DRAFT MASTER PLAN 2019

WHAT TO LOOK OUT FOR IN BISHAN AND TOA PAYOH!

Bishan and Toa Payoh are centrally located towns with easy access to amenities. Residents will enjoy new recreational and community facilities alongside new housing as well as improved connectivity with new cycling paths and park connectors. Residents can also look forward to more job opportunities nearer to home at the Bishan Sub-Regional Centre and shorter commute time with the new Thomson-East Coast (TEL) and Cross Island Phase 1 (CRL1) MRT Lines. For more information on the Draft Master Plan 2019, please visit ura.sg/DMP19.

HOW OUR TOWNS ARE PLANNED

Our towns are planned to be liveable and self-sufficient, with easily accessible shops, health care, schools, community facilities and parks. Commercial nodes, industrial estates and business parks within or nearby the town, also help to provide nearer job opportunities for residents. The detailed planning and implementation of plans for each town is a joint effort of many government agencies.



NEW NURSING HOMES

There will be new nursing homes set in tranquil locations at Potong Pasir Ave 1 along the Kallang River, and at Venus Drive next to the Windsor Nature Park. The nursing home at Potong Pasir will also be co-located with a senior care centre.

NEW MRT STATIONS

Bright Hill Station will be an interchange station for the new TEL and CRL 1 MRT lines, which will be completed by 2020 and 2029 respectively. Residents will also be served by the new Upper Thomson TEL Station.

BISHAN SUB-REGIONAL CENTRE

With excellent public transport connections, Bishan Sub-Regional Centre (SRC) will be transformed into an employment node that is integrated with community facilities to serve both residents and workers.

REFRESHED FACILITIES AT COMMUNITY CLUBS & RELOCATED BISHAN NORTH COMMUNITY CLUB

A gym for seniors and other new facilities will better serve residents at the newly upgraded Bishan Community Club. Residents can also look forward to a refreshed Thomson Community Club and the upcoming Bishan North Community Club that is co-located with the Eunoia Junior College. Toa Payoh West Community Club will also be upgraded and co-located with a new NKF dialysis centre.

MT. ALVERNIA EXPANSION

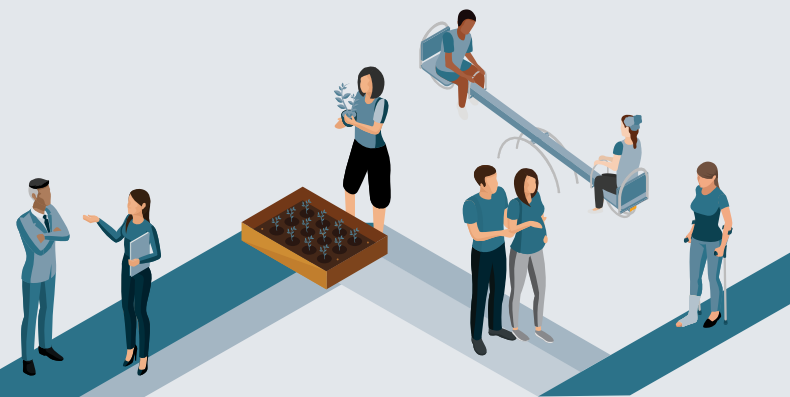
Mt Alvernia Hospital will be enhancing its medical services with a new wing focusing on family-centric healthcare services.

TOA PAYOH COMMUNITY HUB

The Toa Payoh Town Centre will be rejuvenated to include a vibrant sports and community hub. Studies are underway to integrate the Toa Payoh Town Park with new sports and community facilities, to provide one-stop convenience for residents in the heart of Toa Payoh.

ENHANCING INTER AND INTRA TOWN CONNECTIVITY

A seamless walking and cycling route will enhance connectivity from Bishan, Toa Payoh and other towns along the Kallang River to the city centre. Residents can look forward to new park connectors, an upgraded underpass below CTE, and a new cycling bridge across Braddell Road and PIE.



LEGEND

EXISTING DEVELOPMENTS

- Park
- Interim Park
- MRT
- Bus Interchange
- Integrated Transport Hub
- Waterbody
- Park Connector/Cycling Route

NEW DEVELOPMENTS

- Residential
- Integrated Development
- Industrial
- Hawker Centre
- Integrated Transport Hub
- Road Improvement (Upcoming/Under Study)
- Commercial
- School
- Community Centre
- Healthcare Facility
- MRT
- Park
- Park Connector/Cycling Route